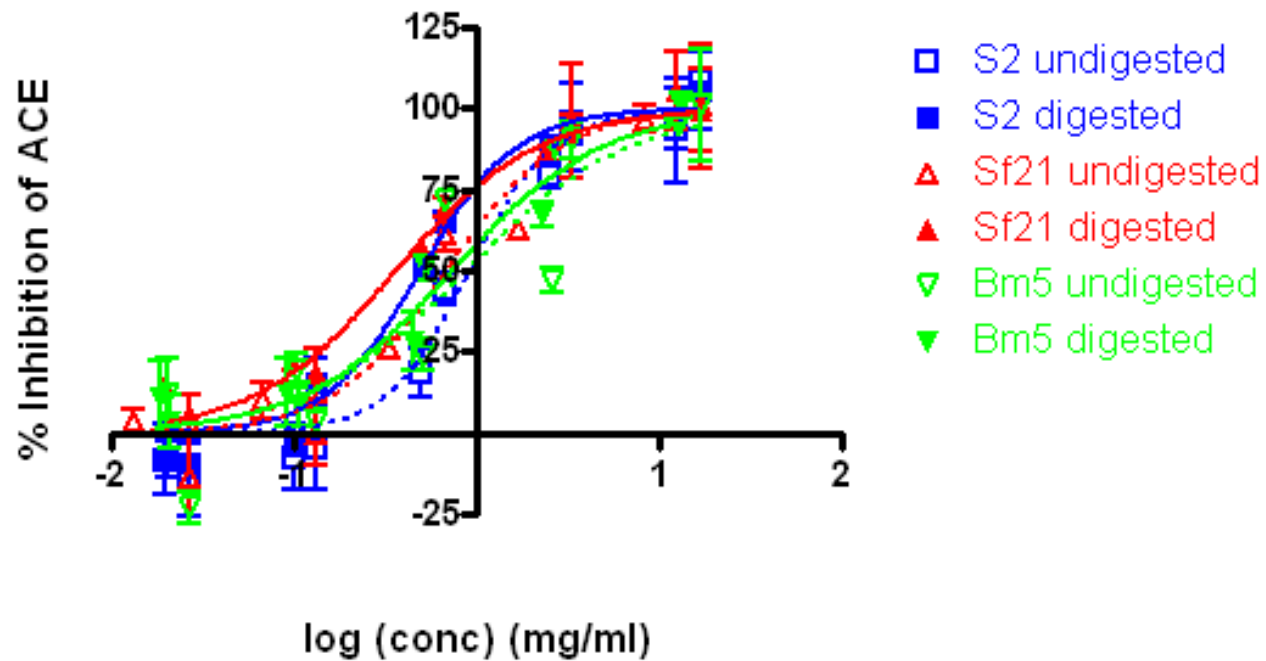


A



B

Cell Line	IC ₅₀ (95% CL; R ²)	
	Undigested	Digested
S2 (<i>D. melanogaster</i>)	0.9 (0.6-1.3; 0.96)	0.5 (0.4-0.6; 0.98)
Sf21 (<i>S. frugiperda</i>)	0.7 (0.4-1.0; 0.95)	0.4 (0.2-0.5; 0.98)
Bm5 (<i>B. mori</i>)	0.9 (0.3-2.3; 0.83)	0.7 (0.5-1.1; 0.96)

Figure 1

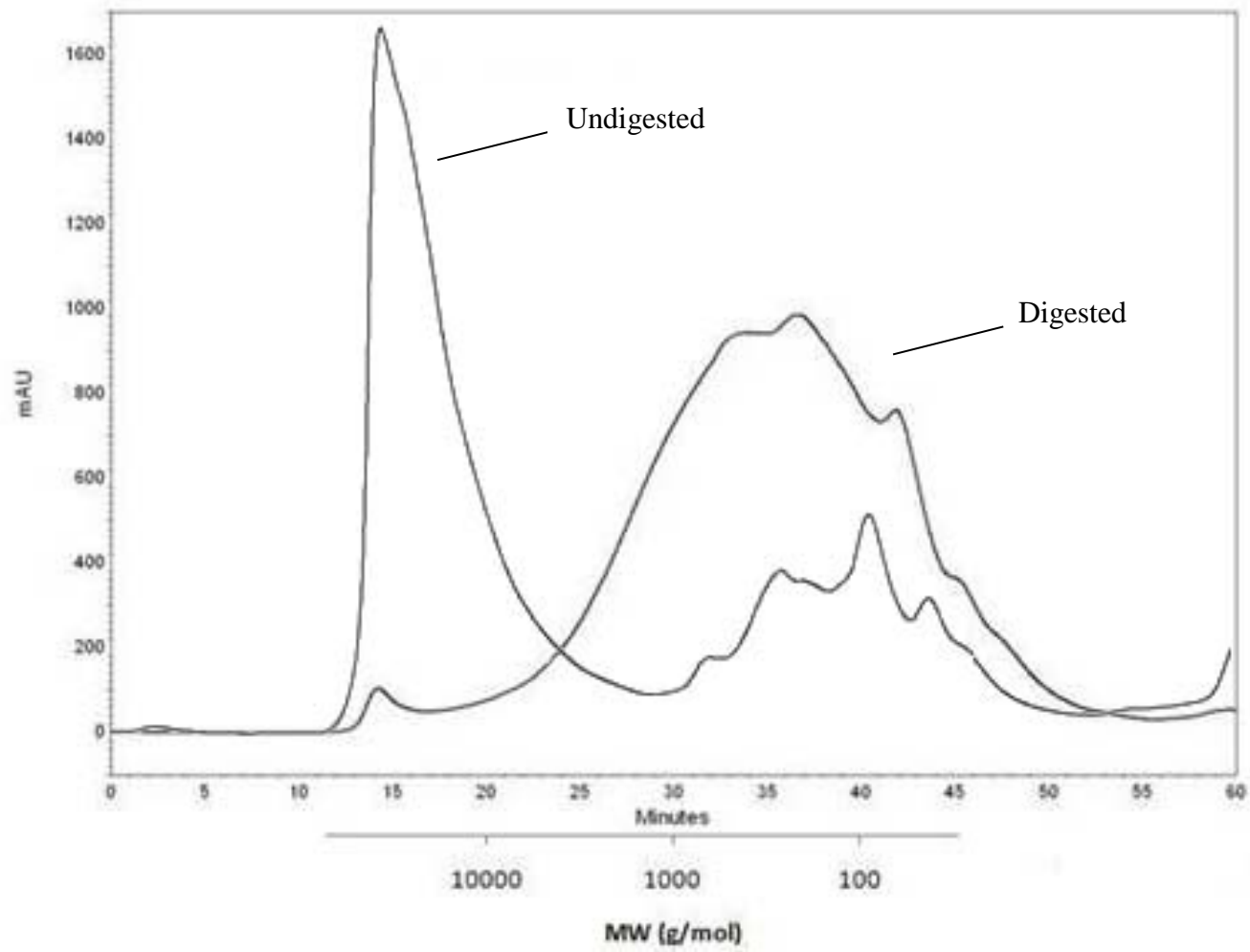


Figure 2

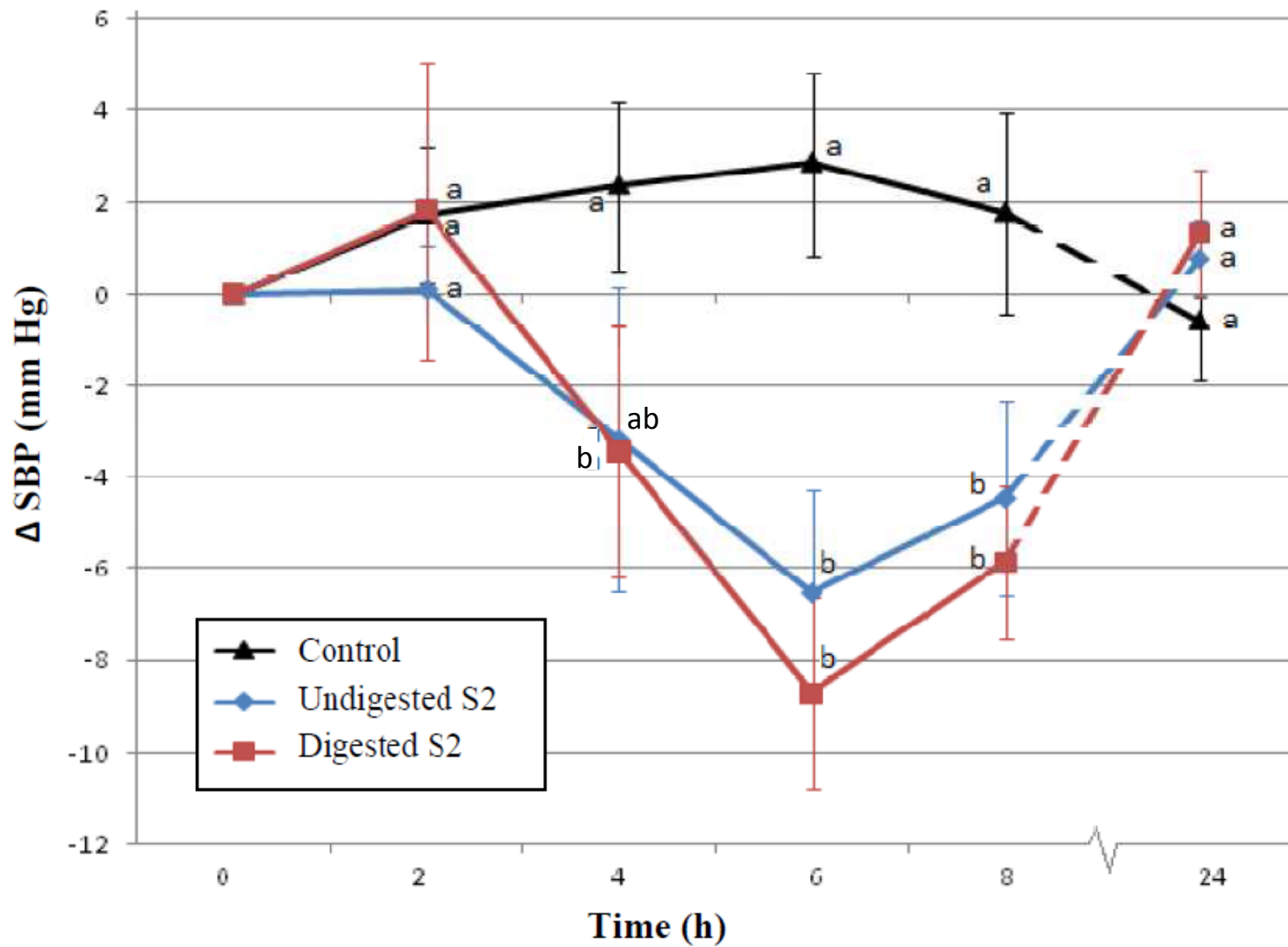


Figure 3